

HURRICANE PREPAREDNESS GUIDE



ST. JOHNS COUNTY HURRICANE HISTORY

St. Johns County residents have experienced many storms throughout history. This is a brief summary of hurricanes that have impacted our community since 1964.

HURRICANE DORA SEPTEMBER 1964

Landfall in St. Augustine as a Category 2 hurricane. Winds reported at 110 mph and produced up to 12' storm surge in St. Augustine. [Most recent landfalling hurricane in St. Johns County.](#)

HURRICANE CHARLEY AUGUST 2004

Landfall near Captiva Island, Florida as a Category 4 hurricane. St. Johns County felt the effects of Hurricane Charley's wind and rainfall. Wind 50 mph; Rain 1.5-5 inches.

HURRICANE FRANCES SEPTEMBER 2004

Landfall near Stuart, Florida as a Category 2 hurricane. Hurricane Frances resulted in heavy rains on already saturated ground left by Hurricane Charley. Wind 60 mph; 5-8 inches of rain.

HURRICANE JEANNE SEPTEMBER 2004

Landfall near Stuart, Florida, virtually the same location Hurricane Frances had come ashore three weeks earlier, as a Category 3 hurricane. Hurricane Jeanne produced excessive rainfall and damage was difficult to isolate as much was already present from Hurricanes Charley and Frances just weeks earlier. Wind 60 mph; 3-5 inches of rain.

HURRICANE IRMA SEPTEMBER 2017

Hurricane Irma made landfall near Marco Island, Florida as a Category 4 hurricane. Rain average of 10"; Wind Gusts to 78 mph; Storm Surge up to 4' along both the Atlantic and St. Johns River Coastlines; Spawned 3 EF-1 tornadoes.

1964

1999

2004

2016

2017

2022

HURRICANE FLOYD SEPTEMBER 1999

Landfall near Cape Fear, North Carolina as a Category 2 hurricane. Hurricane Floyd tracked parallel to the Florida Coastline, resulting in significant beach erosion. Wind 67 mph; 6-8 inches of rain; Coastal erosion.

HURRICANE MATTHEW OCTOBER 2016

Hurricane Matthew made its closest approach to St. Johns County as a Category 3 hurricane, 30 miles east of Summer Haven. Rain average of 7"; Wind Gusts to 86 mph; Storm Surge up to 7'; Significant beach erosion. Matthew produced some of the most significant impacts experienced in St. Johns County since Hurricane Dora in 1964.

HURRICANE IAN SEPTEMBER 2022

Hurricane Ian made landfall near Cayo Costa, Florida as a Category 4 hurricane. Rain average of 16"; Wind Gusts to 60 mph; Storm Surge up to 4' / Significant beach erosion.

HURRICANE NICOLE NOVEMBER 2022

Hurricane Nicole made an unusual November landfall as a Category 1 hurricane near Vero Beach, Florida. Rain average of 8"; Wind Gusts to 44 mph; Storm Surge up to 2' feet. Nicole's large circulation and high pressure to its north drove onshore winds and storm surge for over 2 days in St. Johns County.

HURRICANES

FOR MORE DETAILED INFORMATION VISIT:
www.nhc.noaa.gov/aboutsshws.php

What is a Hurricane?

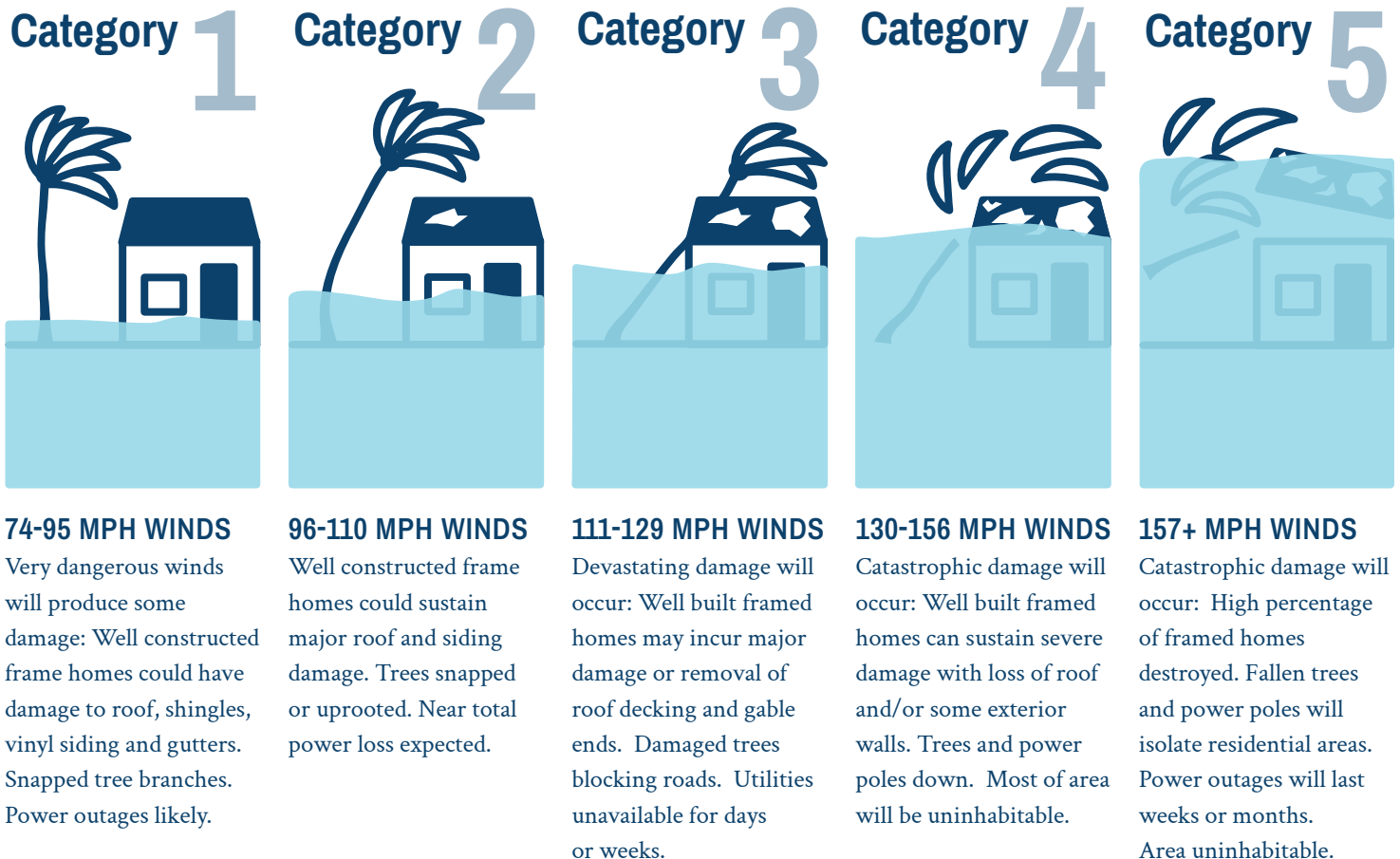
Hurricanes are large rotating storms, often referred to as tropical cyclones, that form over warm waters in tropical areas. Hurricanes begin when a tropical depression forms in the ocean. A tropical depression is a line of rain showers and weak thunderstorms that circle around an area of low air pressure. The low air pressure causes the hot, humid air from the ocean to rise in a spiral shape. As that warm air rises, it releases heat, cools down, and condenses into gusty bands of clouds and storms. When winds reach 39 miles an hour, the tropical depression becomes a tropical storm. When winds reach 74 miles an hour, it's officially a hurricane.

Hurricane Watch

An announcement that sustained winds of 74 mph or higher are possible within the specified area in association with a tropical, subtropical, or post-tropical cyclone. A hurricane watch is issued 48 hours in advance of the anticipated onset of tropical storm force winds.

Hurricane Warning

An announcement that sustained winds of 74 mph or higher are expected somewhere within the specified area in association with a tropical, subtropical, post-tropical cyclone. A Hurricane Warning is issued 36 hours in advance of the anticipated onset of tropical storm force winds.



STORM SURGE

What is Storm Surge?

Storm surge is the abnormal rise of water generated by a storm, over and above the predicted astronomical tide.

Storm Surge Watch

An announcement of the possibility of life-threatening inundation from rising water moving inland from the shoreline somewhere within the specified area, generally within 48 hours. The watch may be issued earlier when other conditions are expected to limit the time available to take protective actions for surge.

Storm Surge Warning

An announcement of the danger of life-threatening inundation from rising water moving inland from the shoreline somewhere within the specified area, generally within 36 hours. The warning may be issued earlier when other conditions are expected to limit the time available to take protective actions for surge.

TORNADOS

What is a Tornado?

A rotating column of air touching the ground, usually attached to the base of a thunderstorm. Some tornadoes are clearly visible, while rain or nearby low-hanging clouds obscure others. Tornado size can vary depending on the weather situation. Tornadoes are rated on the Enhanced Fujita (EF) Scale.

Tornado Watch

Is issued by the Storm Prediction Center when conditions are favorable for the development of tornadoes in and close to the watch area. Watches are usually issued for a duration of 4 to 8 hours. They are normally issued well in advance of the actual occurrence of severe weather.

Tornado Warning

Is issued by the National Weather Service when a tornado has been sighted or indicated by weather radar. A Tornado Warning can be issued without a Tornado Watch already being in effect.

Understanding Storm Surge Flooding

Storm surge is destructive, life-threatening coastal flooding. It accounts for about half of the deaths associated with tropical cyclones in the U.S. To help you determine the best way to prepare, NOAA coastal flooding forecasts are expressed as feet of water above ground level.

GREATER THAN 9 FEET

6-9 FEET

3-6 FEET

0-3 FEET



Avoid the Threat

If a Tornado Warning is issued or threatening weather approaches move to your pre-designated safe room, a small room nearest the center of the structure away from windows. Gather blankets to cover yourself with to help protect from flying debris. Don't forget to bring your pets into the safe room with you!

DISASTER PLANNING

Your Disaster Plan

As residents of a coastal community, we must always be aware of our vulnerability to hurricanes.

If disaster strikes are you ready?

Is your family ready? Is your business ready?

Visit the following websites for additional information on Disaster Planning.

ST. JOHNS COUNTY EMERGENCY MANAGEMENT
sjcemergencymanagement.com

FEDERAL ALLIANCE FOR SAFE HOMES
flash.org

FEDERAL EMERGENCY MANAGEMENT AGENCY
fema.gov/areyouready

READY CAMPAIGN
ready.gov/business

FLORIDA DISASTER BIZ
floridadisaster.biz

Emergency Supply Kit

Ensure you and your family are prepared before a disaster strikes. If our community is impacted you may lose access to basic services, such as power and water. Access to essentials like food and water may be limited.

STOCK UP ON ESSENTIALS AND PREPARE YOUR EMERGENCY SUPPLY KIT NOW.

Do You Have a Special Medical Need?

If you or a family member have a disability or special medical need, additional considerations must be addressed when planning, evacuating, and sheltering.

**DO NOT WAIT UNTIL THE LAST MINUTE.
 PLAN AHEAD - BE PREPARED**

Know Your Risk

Do you live in a Hurricane Evacuation Zone? Visit the St. Johns County Emergency Management website and click the “My Evacuation Zone” link, enter your address, and Know Your Zone.

Evacuations

Think ahead about evacuations. If you are ordered to evacuate ...

**WHERE WILL YOU GO?
 HOW WILL YOU GET THERE?**

Depending on the storm, residents may only need to move further inland.

Often 10 miles is enough. Think 10s of miles, not 100s of miles.



Contact Information

Along with family members and friends, be sure to include your banking, insurance, and medical contacts. Include additional numbers that are important to you should you be away from home for an extended period of time.

Keep all contact information up-to-date in a small notebook for easy access should you be ordered to evacuate.

BEFORE THE STORM

How can I prepare my home?

There are several, simple steps to making your home storm-ready and they do not have to be expensive fixes.

INSPECT YOUR ROOF

Before hurricane season, have a licensed roof contractor inspect, perform repairs, and double-check the integrity of your roof. Clear gutters and drains and trim nearby trees.

PROTECT YOUR WINDOWS

Install impact resistant windows or hurricane shutters. Otherwise, be ready to cover your windows with 5/8" plywood when a storm is approaching.

Duct tape provides NO protection.

PREPARE YOUR YARD

Unhealthy trees and limbs, yard furniture and decorations are among the objects that could become deadly missiles in high winds. Keep your trees pruned, clean out your gutters on a regular basis, and when a storm is coming:

- Properly dispose of any piles of tree limbs or debris.
- Bring in all large yard items, such as furniture, grills, and bird baths.
- Do not drain your pool, add extra chlorine, and turn off power to pool equipment.

PHOTO DOCUMENTATION

Take photos and video of your home and all of your belongings for insurance purposes.



PREPARE YOUR VEHICLE

- Review your insurance policy.
- Fill gas tank when a storm approaches
- Build a survival kit for your car: first aid, non-perishable food/water, tire inflater, tool kit, jack and spare tire, jumper cable, road flares, flashlight, mobile device chargers.

BRACE YOUR GARAGE DOOR

Garage doors in good condition can be braced with retrofit kits while new doors must meet stringent wind requirements. After Hurricane Andrew, engineers determined four out of five homes that suffered major structural damage lost their garage door first.

GENERATOR SAFETY

Generators produce carbon monoxide, a colorless and odorless gas. Always run generators outdoors, get a CO detector, and follow all manufacturer's guidelines.

SANDBAGS

- Sandbag distribution sites will be strategically located throughout St. Johns County, according to projected storm impacts.
- The County will provide 20 sandbags to residents of St. Johns County and the material to fill them.

Resident of St. Johns County should bring a shovel and gloves to fill and load their sandbags.

**Prior to a storm, sandbag availability and locations will be announced*

INSURANCE CHECK-UP

Check your homeowner’s policy limit and make sure the amount is enough to rebuild your home. Understand your hurricane/ windstorm deductible. Understand what disasters your insurance policy covers, and those it doesn’t. Review your policy to ensure you’re adequately covered. Photograph and inventory your possessions. Keep documents with you if you evacuate. If you rent, consider purchasing content coverage.

No home is completely safe from potential flooding. Flood insurance can be the difference between recovering and being financially devastated.



“Nobody ever thinks it’s going to be their house”

Low-risk doesn’t mean no risk. More than 20% of flood claims come from properties outside high-risk flood zones. This hurricane season, make sure you’re prepared.

Flooding can happen anytime, anywhere.

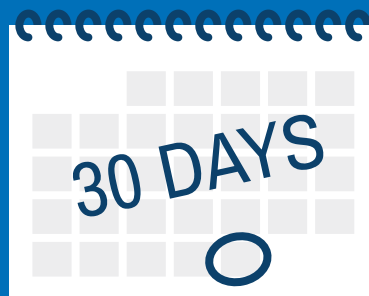
Homeowners insurance does not typically cover flood damage. There are over 28,000 active flood insurance policies in St. Johns County, are you one of them? Protect the life you’ve built by purchasing Flood Insurance.



Visit the St. Johns County Flood Zone Viewer: www.gis.sjcfcl.us/floodviewer to learn about your flood risk.

That’s the number of days it takes for flood insurance to go into effect. Don’t wait for the next storm to think about purchasing flood insurance.

Visit www.floodsmart.gov to learn about purchasing flood insurance today!



BEING PREPARED

As residents of a coastal community we are often reminded of our vulnerability to hurricanes. Every family and business in St. Johns County should be prepared. Do not wait until a storm is approaching to begin your preparedness. Being prepared is having all in readiness before Hurricane Season begins on June 1st.

Residents of St. Johns County are evacuated by zone - so it is important you Know Your Zone.

TO FIND YOUR EVACUATION ZONE,
VISIT OUR WEBSITE AT:
sjcemergencymanagement.com

Being prepared for a disaster is like being prepared for any other important event in life.



BUILD A DISASTER KIT

Pre-Hurricane Season Preparations

In the event of an emergency, you will need access to food, water, and essential items for several days. Gather supplies, and store in easy to access containers.

Disaster Kit Checklist

- Water - One gallon per person per day for 7 days
- Non-perishable foods / Manual can opener
- Specialty Items such as baby food, formula and diapers for infants; depends for the elderly; specialty foods for diabetic diets should also be included.
- Prescriptions / Medications
- Clothing - Including rain gear and sturdy shoes
- First Aid Kit
- Sanitation Supplies - wipes, garbage bags
- Personal Hygiene Items
- Flashlights and extra batteries
- Radio - Battery operated or hand crank
- Electronics and chargers - Cellphones, tablets, laptops, battery pack, Etc.
- Cash - Banks and ATM's may not be available
- Pet Supplies - At least 7 days of food, water and medications for your pets
- Any additional items your family may need

Document Checklist

Bring all documents that would be difficult or impossible to replace if lost or destroyed

- Drivers License / Picture ID / State Issued ID
- Cash / Credit cards / Debit cards
- Important telephone numbers and emergency contacts
- Medical Records
- Prescription information - medication, dosage, refills
- Doctors' names and telephone numbers
- Insurance Documents - Business, Home, Flood, Vehicle - policy numbers, policy types - household inventory, photos, video
- Banking / Creditor information and contact numbers
- Documents - adoption, death, divorce, marriage certificates - copies of wills - home, property, vehicle titles

ALERTS & WARNINGS

Receive alerts about emergencies by signing up for the St. Johns County Emergency Notification System, **Alert St. Johns**

This system enables us to provide you with critical information quickly in a variety of situations, such as severe weather, unexpected road closures, water advisories, missing persons, evacuations of buildings or neighborhoods and incidents that may threaten public safety.

Receive time-sensitive messages wherever you specify, such as your home, mobile or business phones, email address, text messages and more. You pick where, you pick how.



To register for Alert St. Johns, visit:
alertstjohns.com

The NOAA Weather Radio is the National Weather Service's direct link to the public. Weather information is broadcast 24-hours a day. Broadcasts include severe weather watches and warnings, as well as routine forecasts. The Specific Area Message Encoder (SAME) allows weather radios to be programmed to warn only for specific locations.



THE FREQUENCIES FOR WEATHER ALERT RADIOS IN ST. JOHNS COUNTY ARE:

162.550 MHZ

162.425 MHZ

IF YOU ARE LOCATED **NORTH** OF
INTERNATIONAL GOLF PARKWAY

IF YOU ARE LOCATED **SOUTH** OF
INTERNATIONAL GOLF PARKWAY



SAME NUMBER FOR ST. JOHNS COUNTY IS 12109

EVACUATION

An evacuation is a protective action to help save lives when a clear danger to life exists. It is a “mandatory” evacuation order because once issued, under Florida State Statute 252.36 (5)(e), evacuation is required. Returning to an evacuated area before the evacuation order is lifted is also prohibited.

Evacuations Save Lives

An Evacuation Order means that life-threatening conditions are possible in your area.

You will not be ordered to evacuate unless there is a real threat to your well-being, or the possibility that you might become stranded where help could not reach you.

Sometimes a few miles is enough. Think 10s of miles, not 100s of miles. Your safety, and the safety of others, may depend on it.

**When you are told to evacuate,
do so immediately.**

What If I Don't Evacuate

If you do not evacuate when ordered, you may be on your own during a disaster. Emergency Responders will follow mandatory evacuation orders and may not be able to help those who do not evacuate.

Roads may be inaccessible due to water, debris, or other hazards. Depending on the damage received from a storm, roads could be inaccessible for an extended period of time. You may be left without electricity, internet, phone service, and water.

KNOW YOUR ZONE

Understanding Hurricane Evacuation Zones

Residents of St. Johns County are evacuated by zone - so it is important you Know Your Zone.

It's important for residents to know if they live in an Evacuation Zone or a low-lying, flood prone area.

These areas are most likely to be evacuated and knowing these Zones helps you better prepare to evacuate to a safer location and better understand orders from St. Johns County officials. Evacuation Zones are generally located along the Atlantic Ocean, Intracoastal Waterway and St. Johns River coastlines. Evacuation Zones are identified by letters - A, B, C, D, E and F. Typically Zone A is the most vulnerable and the most likely to evacuate first.

TO FIND YOUR EVACUATION ZONE, VISIT OUR WEBSITE AT:
sjcemergencymanagement.com

Not all Evacuations Zones are always ordered to evacuate. If you live in a Zone, listen carefully when evacuations are ordered by St. Johns County officials.

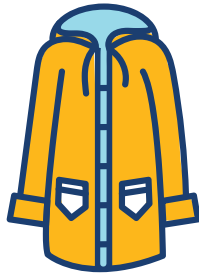
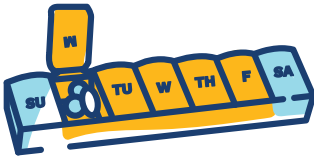


SHELTERING

Sheltering During A Disaster

Taking shelter is necessary in many emergencies. Your Disaster Plan should include your Sheltering Plan. Will you be sheltering outside the evacuation area or at one of the local evacuation shelters? If you plan to use one of the local shelters, familiarize yourself with their locations. By planning for several destinations, you have options when an evacuation is ordered.

Sheltering will involve living with many people in a confined space. There will be little privacy, which can prove to be difficult and unpleasant. It is important for all shelterees to be considerate of one another and to cooperate with shelter managers and staff to make your stay as pleasant, and stress free as possible.



Shelter Supply Kit

- Cot or air mattress, blankets, sheets and pillows. There are no cots or bedding available at the general shelters.
- Drinks and snack foods are suggested to help between meals. If you require specialized foods, you must bring it.
- 7 day supply of medications and supplies. If you are a diabetic on insulin, bring a small cooler for your insulin (or any refrigerated medications).
- Baby food and diapers for infants
- Toiletries: Brush, deodorant, soap, towel, washcloth, shampoo, shaving supplies, toothbrush, toothpaste, etc.
- Extra clothing, rain gear, closed toe shoes
- Eye glasses, hearing aids, batteries
- Cane, walker, wheelchair
- Entertainment items: cards, toys, games, books, magazines, etc.
- Electronics: Cellphones, laptops, tablets, charging cables

SHELTERING OPTIONS

Stay Outside the Evacuation Area

If possible, stay with family or friends outside the evacuation area. Shelters are crowded and noisy, and do not offer the comforts of home.

Stay at a General Shelter

If it's not possible for you to stay with family or friends outside the designated evacuation area, general shelter locations will be announced once an evacuation order has been issued.

Stay at a Pet Friendly Shelter

If you plan to shelter with your pet, you will need to go to one of our pet friendly shelters. Once an evacuation order has been issued and the shelter locations are announced, proceed to a shelter.

Stay at a Special Medical Needs Shelter

The Special Medical Needs Shelter may be appropriate for you if you need electricity for medical equipment, or you need oxygen therapy. Pre-registration is required for the Special Medical Needs Shelter.

If you are assigned to a Special Needs Shelter, you need to be aware that specialized medical care is not available. Staff are there to provide basic assistance only, not for providing complex care. If you are under the care of a doctor or home health care agency, please discuss your sheltering plans with them.

NOT ALLOWED IN ANY SHELTER



**FIREARMS AND WEAPONS
ARE NOT PERMITTED**
**ALCOHOLIC BEVERAGES,
ILLEGAL DRUGS OR TENTS
ARE NOT ALLOWED AT SHELTERS.**

St. Johns County Shelters

The following services are **not** available at Evacuation Shelters in St. Johns County.

- Dialysis Treatments - There will be no dialysis treatments at Shelters
- Hospital Beds - Not available
- Hoyer Lifts - Not available
- Tracheotomy Patients - Suctioning equipment is not available
- Ventilator Patients - Shelters do not have the capability to support ventilator patients

If your health requires this level of advanced care, you must arrange to stay at a facility that can accommodate your complex medical needs.



SHELTER NOTE

Not all shelters will open for every evacuation. Please monitor local radio and television stations, or contact St. Johns County Emergency Management at **(904) 824-5550** to find out which shelters are open when an evacuation order is given. Or check our website **sjcemergencymanagement.com**

PET FRIENDLY SHELTERS

If you plan to shelter with your pet, you will go to one of our Pet Friendly Shelters. While at the shelter your pet will remain kenneled except during exercise and relief periods

You will need to bring your shelter supplies as well as the following supplies for your pet:

Pet Shelter Kit

- Medications your pet requires
- Appropriately sized crate / carrier and bedding
- Food, water and bowls
- Collar, leash, harness - and muzzle if needed
- Pet meds and first aid kit for your pet
- Pet comfort items such as blankets and toys
- Current picture of you and your pet together
- Label all pet supplies with your name, address and phone number

Pets Allowed at Pet Friendly Shelters

ACCEPTABLE PETS

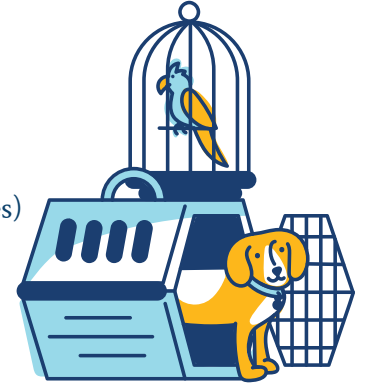
- Dogs
- Cats
- Pocket Pets
- Rabbits
- Birds

ANIMALS NOT PERMITTED

- Exotics (insects, primates, snakes)
- Farm Animals
- Wildlife

SERVICE ANIMALS ARE ALLOWED AT ALL SHELTERS

Per Florida State Statute 413.08 (1) d a service animal is a “dog” or a “miniature horse”.



SPECIAL MEDICAL NEEDS SHELTERS

Begin by gathering the basic shelter supplies found on the General Shelter Supply List. Then, depending on your medical needs, bring any of the following items you will need:

Special Medical Needs Shelter Kit

- Cane / Walker / Wheelchair / Electric Convenience Vehicle (ECV)
- Extra battery and / or converter for charging ECV
- Hearing / Speech / Visual Impairments
- Extra batteries for hearing aids
- Pencil and paper for communicating emergency information
- Medical Alert Bracelets / Tags
- A written description of your needs if you are unable to describe them in an emergency
- All medical equipment you use regularly must be brought with you to the Shelter
- BiPaps, CPAPs, nebulizers, oxygen concentrator and / or tanks
- Catheter supplies, ostomy supplies
- Prescriptions and a list of all your current medications
- Identification labels should be put on all medical equipment (nebulizers, oxygen, walkers, wheelchairs, etc.) you take with you to the shelter.

IMPORTANT NOTE

The Special Medical Needs Shelter is not a hospital or nursing home. It is not for people who need 24-hour dedicated care, who require hospital beds, ventilators, or have other complex medical needs. If you require complex medical care you should plan to stay at a specialized facility outside the evacuation area.

TRANSPORTATION ASSISTANCE

Transportation Registration

Transportation is available for individuals who need transportation to a General, Pet Friendly, or Special Medical Needs Shelter. As a general rule, pets will be transported with their owners. All animals must be transported and housed in a sturdy plastic or metal cage / transport device.

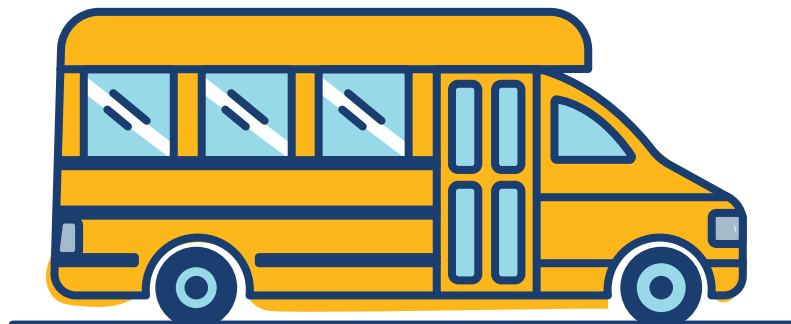
Transportation During an Evacuation

In the event of an evacuation, you will be contacted by the Emergency Operations Center with your assigned pick-up time. You will be given as much advanced notification as possible to allow you to prepare for evacuation.

BE READY FOR TRANSPORT

Once contacted, please gather your shelter supplies and have them ready by the door.

If you have a pet that is evacuating with you, have your pet shelter supplies ready also.



If you need evacuation assistance, complete the **St. Johns County Evacuation Assistance Registration Form** on pages 15-16 or visit our website: sjcemergencymanagement.com

ST. JOHNS COUNTY EVACUATION ASSISTANCE REGISTRATION FORM

St. Johns County Emergency Management | 100 EOC Drive | St. Augustine, FL 32092
Phone (904) 824-5550 | Fax (904) 824-9920 | www.sjcemergencymanagement.com



The Evacuation Assistance Program is for residents of St. Johns County who need sheltering assistance during a disaster. Shelters should be your refuge of last resort if you have nowhere else to go. Residents of nursing homes, assisted living facilities, or other group facilities, do not qualify for registration in this program. Under Florida State Statute 252 these facilities are required to have a Comprehensive Emergency Plan to evacuate their residents to a predetermined location outside the evacuation area.

This form must be completed in full, and signed, or it will be returned to you. Please print clearly.

PERSONAL INFORMATION:

New Registrant: Yes No Today's Date: _____

Full Name: _____ Gender: _____

Date of Birth: _____ Age: _____ Weight: _____ lbs Does your weight require special transport: Yes No

Physical Address: _____

Street City Zip

Mailing Address: _____

Street / Post Office Box City Zip

Telephone Number: _____ / _____
Area Code / Primary Phone Number Area Code / Secondary Phone Number

Living Situation: Alone w/Spouse Other: _____

Residence Type: House / Apartment Mobile Home/RV Primary Language: _____

EMERGENCY CONTACT INFORMATION: (List all that apply)

(Primary) Name: _____ Relationship: _____ Phone: _____

(Secondary) Name: _____ Relationship: _____ Phone: _____

Home Health / Hospice Care: Yes No Agency: _____ Phone: _____

MEDICAL INFORMATION: (Check all that apply)

Dementia Alzheimer's Disease Mental Health Impaired

Hearing Aids Deaf Legally Blind Speech Impaired

Wheelchair Cane
 Electric Manual / Standard Walker

Bedridden Could sleep on cot / air mattress in disaster situation: Yes No

Incontinence Ostomy Care Dialysis Dependent
 Catheter Line Feeding Tube Intravenous Line
 BiPAP Machine CPAP Machine Nebulizer Machine
 Cardiac VAD System Oxygen Concentrator | Tank Ventilator

Additional Medical Information: _____

TRANSPORTATION INFORMATION: (Check all that apply)

Can you / or someone drive you to an Evacuation Shelter: Yes No
Is someone going to the Evacuation Shelter with you: Yes No Name: _____
If you need transportation, what type do you need: Car / Bus Wheelchair Van Stretcher Van

SERVICE ANIMAL INFORMATION (Florida Statute: F.S 413.08 (1) d) | PET INFORMATION: (Check all that apply)

Service Animal Service Animal Type: Dog Miniature Horse
Do you have Household Pets that need to be sheltered: Yes No Type and number of pets: _____

Animals not permitted at shelters: Exotics, Farm Animals, Wildlife

Applicant Signature & Health Insurance Portability and Accountability Act (HIPAA)

I certify that this information is correct. I understand that based on this application and the data I have provided, St. Johns County Emergency Management (SJCEM) will determine which emergency evacuation assistance, if any, this program may be able to provide. **I understand that there is no cost associated with using any of the County’s disaster evacuation centers or disaster transportation services. “However, should my medical condition deteriorate and should I need advanced medical treatment during transportation to or while populating a St. Johns County evacuation shelter I understand I will be responsible for all charges incurred as a result.”** I grant permission to medical providers, transportation agencies and other individuals providing me medical care to disclose any information required to respond to my needs.

HIPAA Privacy Rule: As defined in the Health Insurance Portability and Accountability Act (HIPAA) Privacy Rule of 1996, by signing this Authorization, I hereby allow the use or disclosure of my medical information by SJCEM, in order to provide me assistance during emergency evacuations.

I understand that information used or disclosed pursuant to this Authorization, may be subject to disclosure by the recipient for the purposes of evacuation, sheltering, transportation and any medical care pursuant to these services.

I understand that I have the right to revoke this Authorization at any time except to the extent that SJCEM has already acted in reliance on the Authorization. To revoke this Authorization, I understand that I must do so by written request to:

St. Johns County Emergency Management
100 EOC Drive | St. Augustine, Florida 32092
Attention: Evacuation Assistance Registry

I understand that if I choose to revoke this Authorization, I will no longer be part of the Evacuation Assistance Registry and I will be responsible for my own evacuation.

Registrants Signature: _____ **Date:** _____

Person Completing Form: _____ **Relationship:** _____

This Section is to be Completed by St. Johns County Emergency Management

Shelter Status: General Shelter General Pet Shelter Special Medical Needs Shelter
 No Assistance Needed Shelters Can’t Support/Advanced Medical Care Needed

Transportation Needed: Yes No Evac Zone: _____

Date Received: _____ Date Removed: _____

AFTER THE STORM



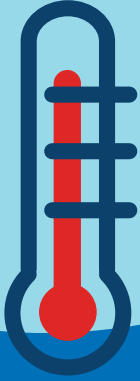

If evacuated, return only when instructed to do so. Have a valid ID with current address as this may be required for re-entry.

Take pictures of all damage before repairs begin and keep receipts for insurance purposes.

When using a contractor for repairs, ensure they are licensed and insured in Florida.

CAUTION

After a widespread flood, drinking water may be contaminated. Disinfect water used for drinking or cooking by boiling for 5 minutes, or add 8 drops of bleach per gallon.

Never place a generator inside a home or garage.


Place outside, away from windows and doors.



Avoid driving to keep roads clear for emergency vehicles.



Beware of wildlife driven to higher ground by flood waters.



Avoid downed power lines, especially when cutting or clearing fallen trees.



Never walk or drive through flood waters. You do not know how deep the water is or what hazards may be below the surface.

Mosquitos

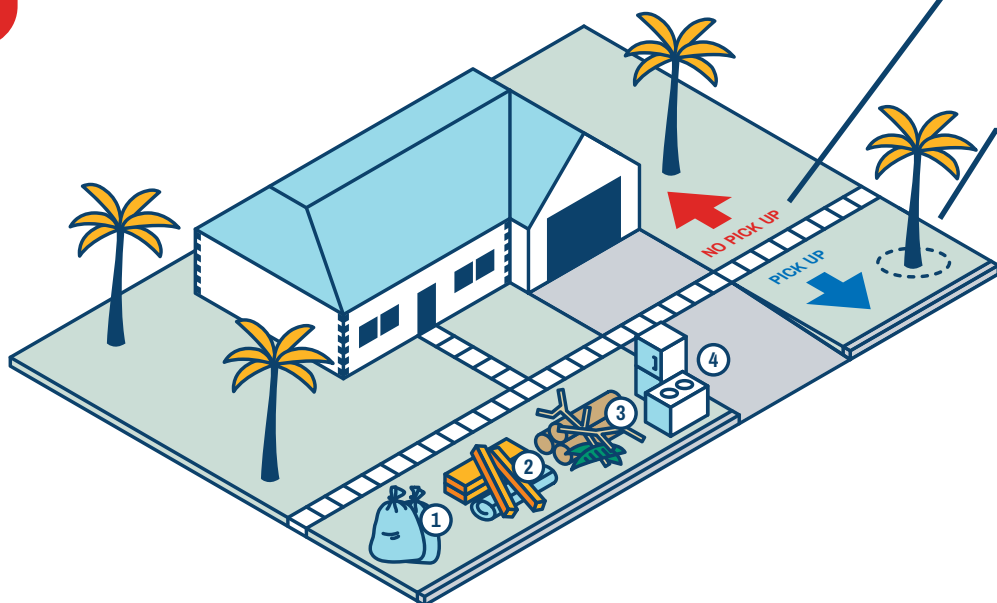
After hurricanes Anastasia Mosquito Control District monitors mosquito populations closely and will take appropriate action when necessary.

To submit service to Anastasia Mosquito Control District request call **904-471-3107**



PICKING UP THE PIECES

Following these specific guidelines when hauling hurricane-related debris to the curb will make for a speedier removal process.



The Wrong Way

CROSSING THE LINE

Any debris placed from the sidewalk toward your property will not be picked up. Contractors cannot collect items on private property.

PROPPING UP

Do not set debris against trees or poles. Doing so makes it harder for cleanup crews to scoop up the items.

IMPORTANT DETAILS

Refrigerator and freezer doors must be secured with duct tape.

Debris must be placed between the sidewalk and road, or in the public easement.

Chemicals and hazardous waste must be taken to a County transfer station.

Do not put debris in the roadway.

The Correct Way

Homeowners are being asked to separate debris into the following categories:

1 HOUSEHOLD GARBAGE

- Bagged trash

2 CONSTRUCTION DEBRIS

- Building Materials
- Drywall
- Lumber
- Carpet
- Furniture

3 VEGETATION DEBRIS

- Tree Branches
- Logs
- No Bagged vegetation

4 APPLIANCES

- Refrigerators
- Washers, dryers
- Freezers
- Stoves
- Water Heaters
- Dishwashers

Post-Hurricane Regularly Scheduled Residential Waste Collection

Our residential service providers will continue to collect all regular containerized and bagged household waste on regularly scheduled service days.

NORMAL YARD WASTE INCLUDES THE FOLLOWING:

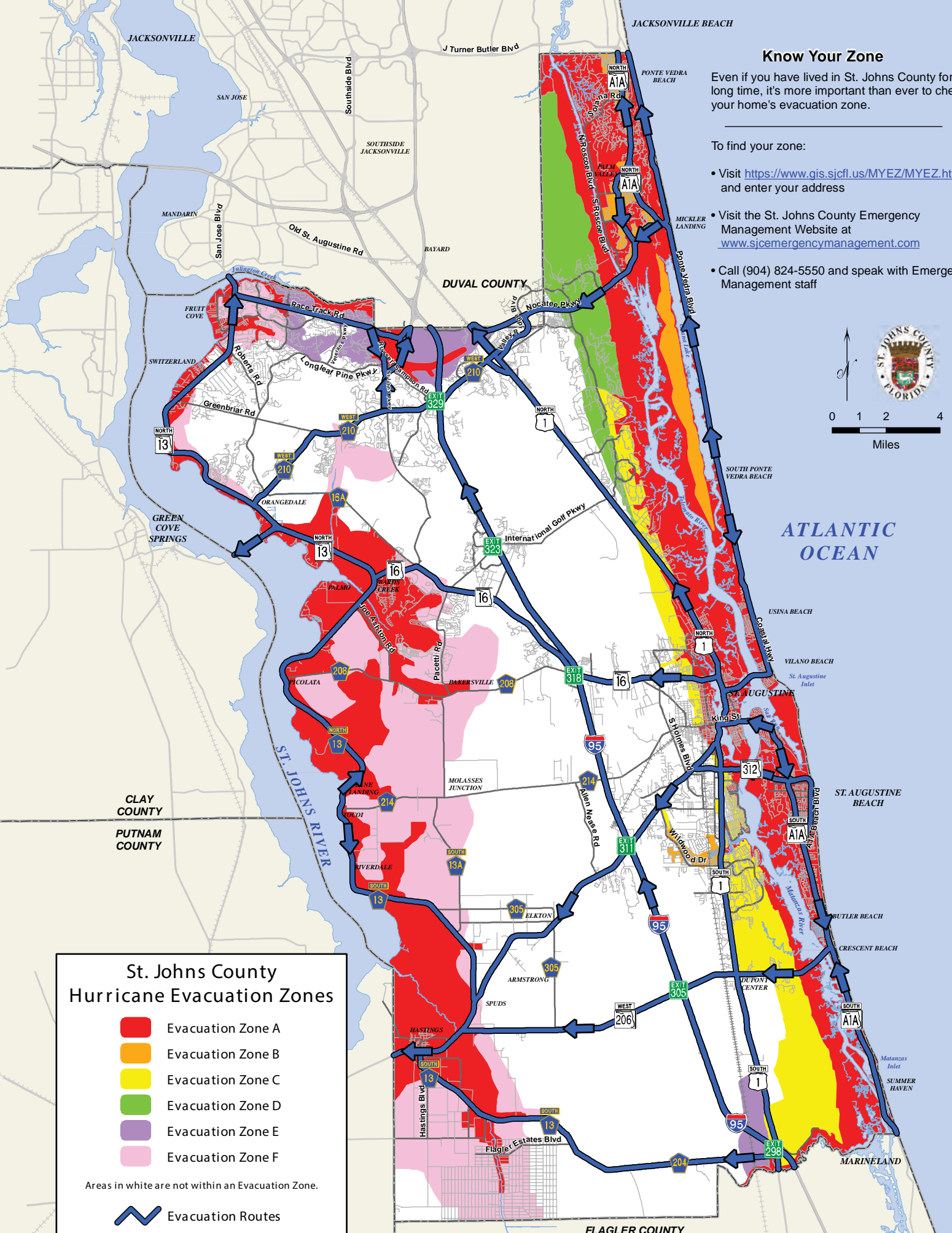
- Grass clippings and leaves placed in cans no larger than 32 gallons, or sealed in plastic bags no more than 50lbs.
- Small vegetative waste, twigs, and branches.
- Do not place near storm-related debris.

Please continue to follow your normal garbage, recycling, and yard waste schedule and guidelines.

NEED MORE INFORMATION ABOUT STORM DEBRIS PICK-UP?

Please contact St. Johns County Solid Waste at **904-827-6980** or visit their website at:

recyclestjohns.com

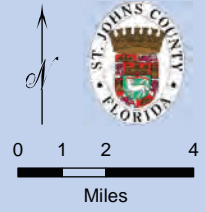


Know Your Zone

Even if you have lived in St. Johns County for a long time, it's more important than ever to check your home's evacuation zone.

To find your zone:

- Visit <https://www.gis.sicfl.us/MYEZ/MYEZ.html> and enter your address
- Visit the St. Johns County Emergency Management Website at www.sicemergencymanagement.com
- Call (904) 824-5550 and speak with Emergency Management staff



St. Johns County Hurricane Evacuation Zones

- Evacuation Zone A
- Evacuation Zone B
- Evacuation Zone C
- Evacuation Zone D
- Evacuation Zone E
- Evacuation Zone F

Areas in white are not within an Evacuation Zone.

Evacuation Routes

Note: During a hurricane evacuation order, mobile home residents must evacuate regardless of their zone.

St. Johns County

ST. JOHNS COUNTY EMERGENCY OPERATIONS CENTER

Phone: 904.824.5550

X/Facebook: @StJohnsEOC

SHERIFF'S OFFICE (non-emergency)

Phone: 904.824.8304

X/Facebook: @StJohnsSheriffOffice

FIRE RESCUE (non-emergency)

Phone: 904.209.1700

X/Facebook: @sjcfirerescue

PUBLIC WORKS

Phone: 904.209.0110

X/Facebook: @SJCFL

SOLID WASTE

Phone: 904.827.6980

X/Facebook: @SJCFL

UTILITIES

Phone: 904.209.2700

X/Facebook: @SJCFL

City of St. Augustine Beach

CITY HALL

Phone: 904.471.2122

X/Facebook: @CityofStAugustineBeach

POLICE DEPARTMENT

Phone: 904.471.3600

X/Facebook: @sabeachpolice

City of St. Augustine

FIRE DEPARTMENT (non-emergency)

Phone: 904.825.1098

X/Facebook: @CityStAugFire

POLICE DEPARTMENT (non-emergency)

Phone: 904.825.1075

X/Facebook: @StAugPD

PUBLIC WORKS

Phone: 904.825.1040

X/Facebook: @CityStAug

ST. JOHNS COUNTY SCHOOL DISTRICT

Phone: 904.547.7500

X/Facebook: @SJCSD

FLORIDA POWER & LIGHT (FPL)

Phone: 800.4.OUTAGE

X/Facebook: @fplconnect

JEA

Phone: 904.665.6000

X/Facebook: @NewsfromJEA

ANASTASIA MOSQUITO CONTROL DISTRICT

Phone: 904.471.3107

COMMUNITY CONNECTIONS